



FEATURES

Summary:

Some Sockeye setups can update incomplete work back to a CMMS. If this option has been enabled a 'Update Incomplete Work from Last Week in CMMS' will be available under the More drop-down box. Refer to Sockeye's [integration options](#) for further details.

Tools / Resources:

- Internal Business Best Practices
- Sockeye Support: support@getsockeye.com
- User Guide and videos can be found at the following link: www.getsockeye.com/support

Revision Log:

Revision	Date	Reason/Update	Updated By:
Rev 1	2023-05-11	Document Creation	C. Banham

Table of Contents

Summary:..... 1

Tools / Resources:..... 1

Revision Log:..... 1

Integration 2

Update Incomplete Work from Last Week in CMMS 2

Integration

When designing the write integration Sockeye would review:

- Current write integration setup and options.
- Fields triggering and data to be updated.
- Common scenarios and or examples that would trigger the changes.
- Timings such as the day of the week and time as a cut-off for KPI purposes.




Details and options would be reviewed with both parties and signed off prior to development.

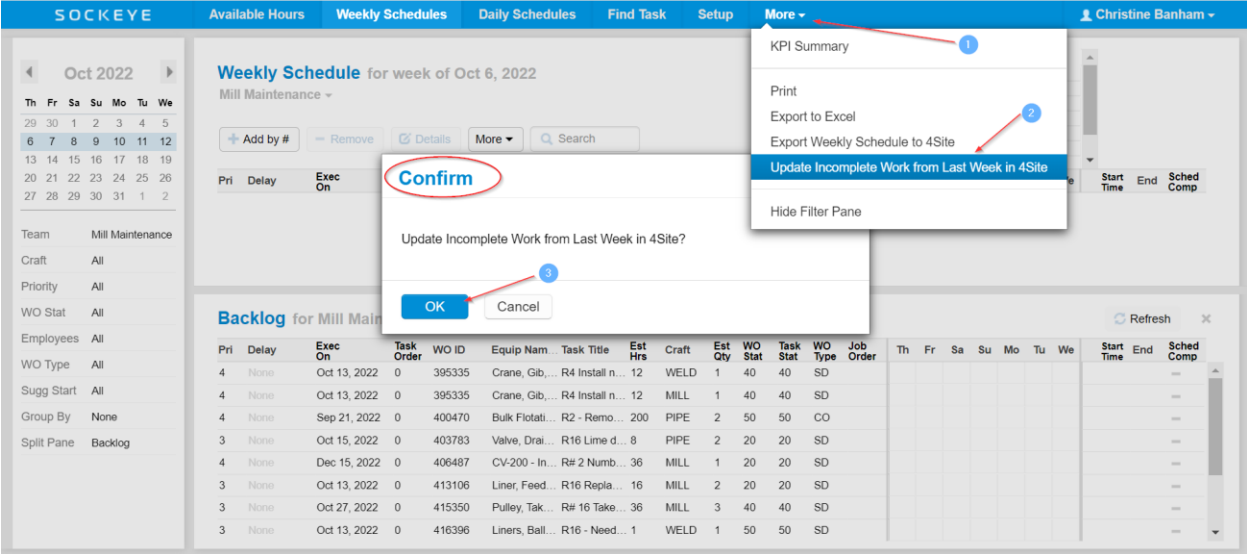
Once approved Sockeye will begin developing the sequences based on the scenario's agreed to in a testing environment for review and eventually moved to production.

Update Incomplete Work from Last Week in CMMS

Video Link: [Update Incomplete Work in the CMMS](#)

Under the Weekly Schedule tab in the blue ribbon; click on the Refresh button within the backlog section this will ensure that any work orders that should be automatically completed under the 'Schedule Compliance' Column are updated.

1. Click on the  tab at the top of the screen in the blue ribbon.
2. Select  CMMS.
3. A 'Confirm' dialog box will appear.
4. Click .
5. All incomplete work orders from the previous week identified in Sockeye will update specified fields within the CMMS.



Note: When exporting back to a CMMS all team schedules will be updated for that specified week period.